



GRIPSUR[®]

NON-SKID COATINGS

PROTECT YOUR BUSINESS, EMPLOYEES AND CUSTOMERS



BCA CONSTRUCTION
SPECIALTIES

47 Purdy Avenue
Port Chester, NY 10573
914.612.4990

www.gripsurcoatings.com

GET A GRIP ON SAFETY



BCA CONSTRUCTION
SPECIALTIES

GRIPSUR® Non-Skid Coatings incorporate the latest advancements in coating technology and are ideal for securing wet or slippery areas. Durable products in a wide range of colors and grades to keep your business safe.



GRIPSUR

NON-SKID COATINGS

BCA CONSTRUCTION
SPECIALTIES

DOT Formula

Vehicular Grade Two Component
Epoxy Floor and Deck Coating



GRIPSUR

NON-SKID COATINGS

BCA CONSTRUCTION
SPECIALTIES

PED Formula

Pedestrian Grade Single Component
Epoxy Floor and Deck Coating



GRIPSUR

NON-SKID COATINGS

BCA CONSTRUCTION
SPECIALTIES

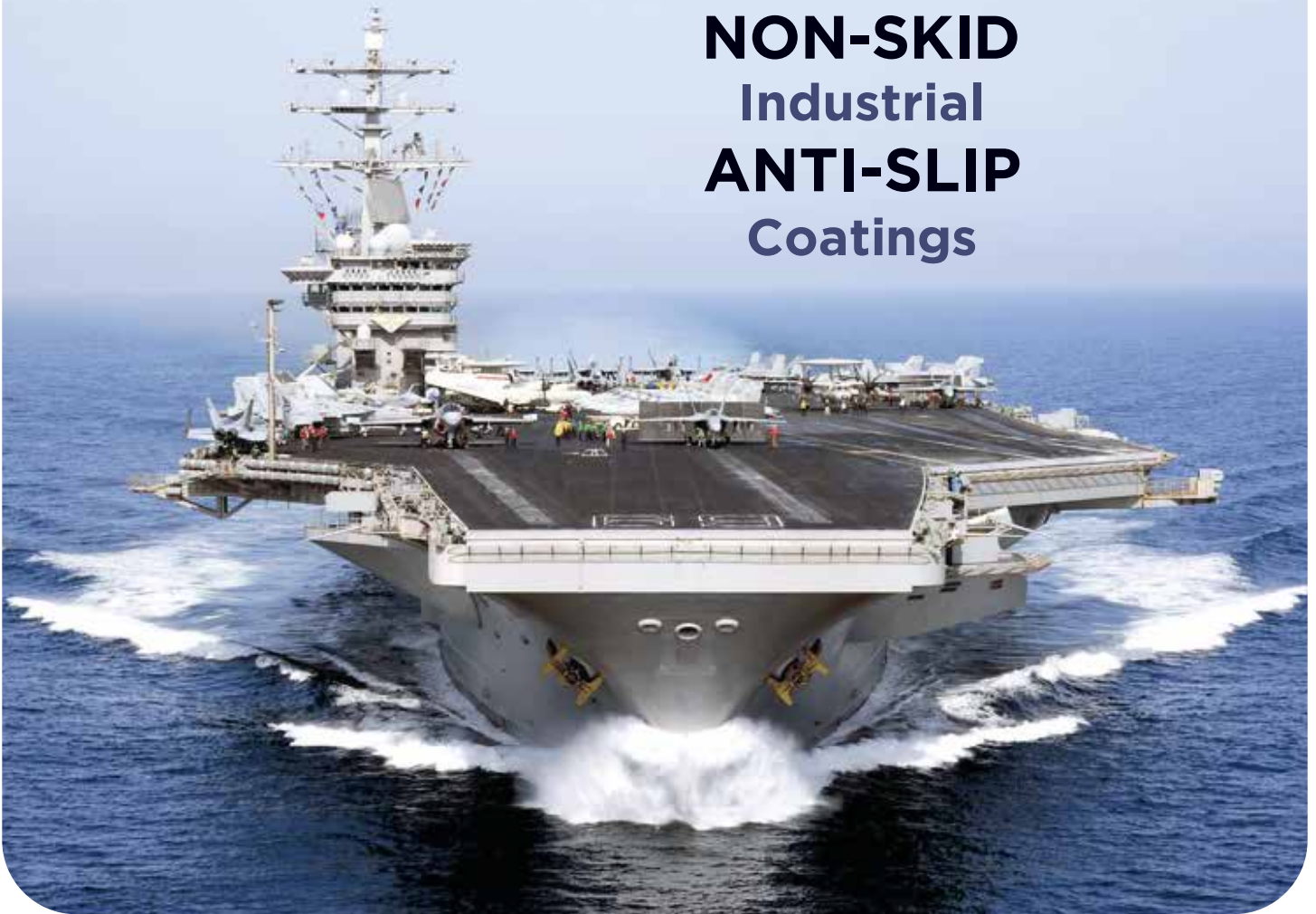
REC Formula

Low Profile Two Component Water-Borne
Epoxy Floor and Deck Coating



GET A GRIP ON SAFETY

Military Grade **NON-SKID** Industrial **ANTI-SLIP** Coatings



The U.S. Navy Counts on Non-Skid Coatings

Creating a slip resistant coating is a science requiring intensive laboratory testing under conditions which are dry, wet, or lubricated with various greases, oils and other contaminants to meet stringent government codes. GRIPSUR Coatings help address the leading workplace hazard—a slip and fall.

Increase Safety while Reducing Maintenance Costs

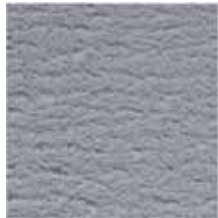
- ✓ Extreme impact and chemical resistance
- ✓ Lasts 5X longer than sand-in-paint
- ✓ High traction in slippery conditions
- ✓ Indoor or outdoor use
- ✓ Low VOC's
- ✓ Withstands the harshest environments



BCA CONSTRUCTION
SPECIALTIES

GET A GRIP ON SAFETY

Non-Skid and Anti-Slip Coatings engineered to exceed the strictest OSHA, DOT and ADA Specifications under wet and dry conditions.



GRIPSUR REC

Excellent UV
Resistance
Water-Based Acrylic
Recreational Areas



GRIPSUR REC

Barefoot Friendly
Water-Based



GRIPSUR PED

Heavy
Pedestrian Traffic
Light Rolling Traffic
Single Component



GRIPSUR DOT

Heavy
Rolling Traffic
Industrial Versatility
Superior Durability



GRIPSUR DOT

Zero VOC's and
HAPs-Free
USDA Acceptable
Extreme Durability



MILITARY GRADE

Ultimate Durability

PEDESTRIAN GRADE

Walkways
Ramps
Platforms
Stairs
Decks

Showers
Boats
Pools
Athletic
Facilities

INDUSTRIAL AND VEHICULAR GRADE

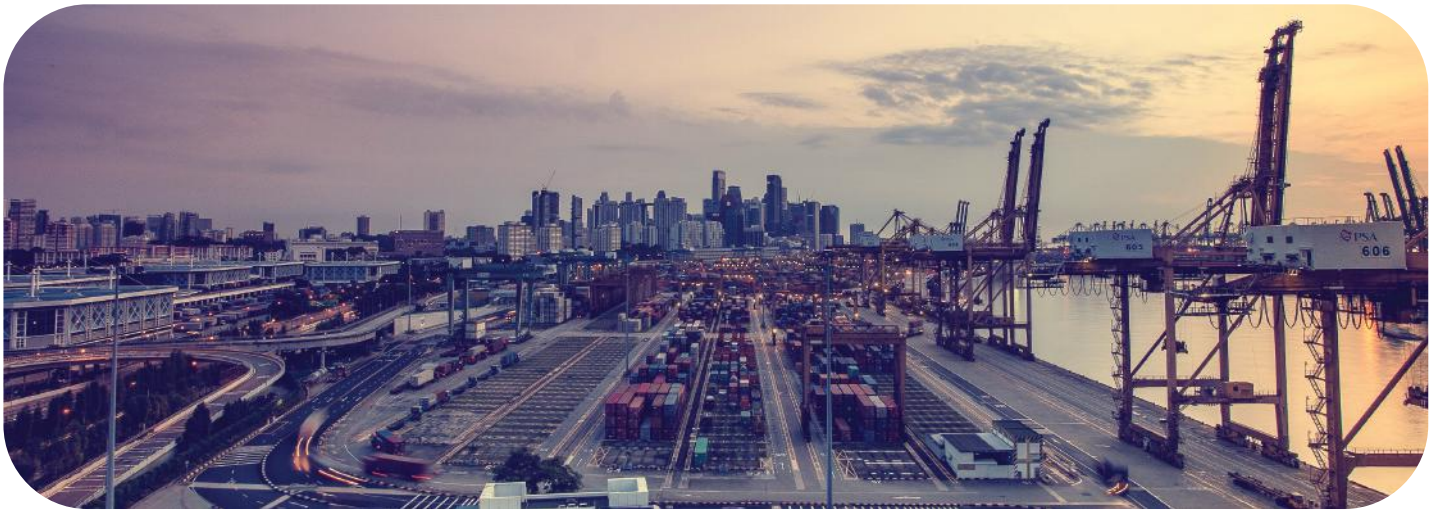
Loading Docks
Forklift Traffic
Emergency
Walkways
Entrances/Exits

Chemical Transfer
Areas
Garages
Splash and Spill
Areas



BCA CONSTRUCTION
SPECIALTIES

BCA Construction Specialties, Inc. | 47 Purdy Avenue, Port Chester, NY 10573 | (914) 612-4990



INDUSTRIAL ANTI-SLIP COATINGS

**INCREASE SAFETY AND REDUCE MAINTENANCE COSTS
PROTECT YOUR BUSINESS, EMPLOYEES AND CUSTOMERS**

GET A GRIP ON SAFETY



Work Barges



Ramps

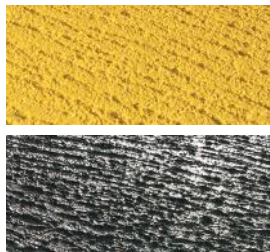


Loading Docks



Gantry Operations

GRIPSUR ADDRESSES THE LEADING WORKPLACE HAZARD - A SLIP AND FALL!



DOT Formula

Direct-to-Metal



PED Formula

Direct-to-Metal

Engineered to exceed Military, OSHA, DOT and ADA Coefficient of Friction specifications under wet and dry conditions. Resistant to oil, gasoline, acids, caustics, hydraulic fluids, salt water, detergent, alcohol and most solvents. Withstands the harshest environments!

Industrial Anti-Slip



Military Grade



Non-Skid Coatings



BCA CONSTRUCTION
SPECIALTIES

BCA Construction Specialties, Inc. | 47 Purdy Avenue, Port Chester, NY 10573 | (914) 612-4990



BCA CONSTRUCTION
SPECIALTIES

GRIPSUR® Non-Skid Coatings – Industrial Anti-Slip Floor and Deck Coatings

GRIPSUR REC ACRYLIC – Pedestrian Grade Elastomeric Acrylic Floor and Deck Coating

GRIPSUR REC ACRYLIC is a single component water-based flexible acrylic anti-slip floor and deck coating formulated for pedestrian traffic. It is easy to apply and offers excellent adhesion to asphalt, concrete, wood and metal surfaces. GRIPSUR REC ACRYLIC is easy to clean up, economical to use and since it is one component, it can be resealed and saved for future use.

- Single component, flexible water-based acrylic.
- Fast drying (4 hours)
- Formulated for areas with normal foot traffic and intermittent vehicular traffic
- Yields a sealed and weather resistant/UV resistant surface
- Excellent color and gloss stability
- Elastomeric – applied over the correct primer, bonds to concrete, steel, wood, fiberglass and asphalt

Walkways & Stairs | Ramps | Locker Room | Platforms | Decks | Assembly Areas



GRIPSUR REC – Low Profile Two Component Water-Based Epoxy Floor and Deck Coating

GRIPSUR REC Formula is a two component water-based low profile anti-slip floor and deck coating formulated with a fine texture finish. The finish is durable, easy to clean and chemically resistant. GRIPSUR REC Formula is suitable for recreational, marine and industrial environments. It is easy to apply and adheres to metal, concrete and wood surfaces.

- Low Profile and fine texture - engineered for barefoot and recreational traffic
- Water-based two component epoxy formulation
- Easy to clean and chemically resistant
- Suitable for recreational, marine and industrial environments

Docks & Marinas | Water & Theme Parks | Work Boats | Commercial Kitchens | Pool Decks





BCA CONSTRUCTION
SPECIALTIES

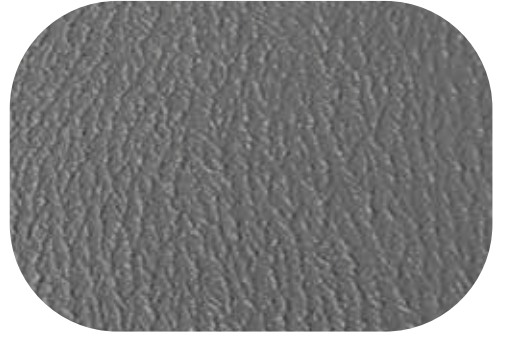
GRIPSUR® Non-Skid Coatings – Industrial Anti-Slip Floor and Deck Coatings

GRIPSUR PED – Heavy Pedestrian Grade Single Component Epoxy Floor and Deck Coatings

GRIPSUR PED Formula is a single component modified epoxy anti-slip floor and deck coating engineered to resist heavy pedestrian traffic. It is easy to apply and offers excellent adhesion to concrete, wood and metal surfaces. GRIPSUR PED is easy and economical to use since it is a one component product and can be resealed for future use.

- Single component modified epoxy engineered to resist light vehicular traffic
- Unused material can be resealed for future use
- Suitable for marine and industrial environments
- Resists oil, gasoline, acids, salt water, caustics and most solvents

Ramps & Walkways | Manufacturing Facilities | Parking Garages | Machine Shops

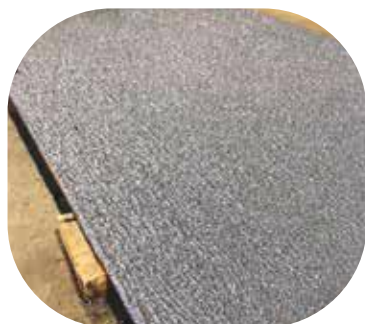


GRIPSUR DOT – Vehicular Grade Two Component Epoxy Floor and Deck Coating

GRIPSUR DOT Formula is engineered to provide anti-slip protection in areas with rolling vehicular traffic.

- Two component, heavy duty protection with rolling vehicular traffic
- Suitable for marine and industrial environments
- Offers excellent chemical resistance to oil, gasoline, acids, caustics, hydraulic fluids, salt water, detergent, alcohol and most solvents

Steel Road Plates | Forklift Areas | Loading Docks | Ships & Work Boats | Transit Systems





BCA CONSTRUCTION
SPECIALTIES

GRIPSUR® Non-Skid Coatings – Industrial Anti-Slip Floor and Deck Coatings

GRIPSUR DOT ZERO VOC – 100% Solids Two Component Epoxy Floor and Deck Coatings

GRIPSUR DOT 2500 is engineered to offer anti-slip protection in areas with heavy rolling and pedestrian traffic. It is easy to apply and has very little odor which makes it ideal for use in odor sensitive applications such as wineries, food processing facilities, hospitals, and confined areas. It is designed to adhere to both metal and wood surfaces.

- Suitable for marine and demanding industrial environments
- Excellent durability – one of the longest lasting commercial anti-slip coatings on the market
- Resists gasoline, oil, acids, grease, animal fats, alcohol detergents, petroleum products, jet fuels, hydraulic fluids, caustics and most solvents

Wineries & Bottling Plants | Food Processing Facilities | Canneries & Meat Packing Plants Warehouses with Heavy Traffic



SELECT THE RIGHT PRIMER FOR THE JOB!

GRIPSUR Acrylic Primer for Acrylic Floor and Deck Coatings: Our Acrylic Primer is a single component zero VOC water-based acrylic primer designed to increase adhesion of GRIPSUR REC ACRYLIC Anti-Slip Coating for Asphalt, Wood and Concrete surfaces. Clear in color.

GRIPSUR Water-Based Epoxy Surface Primer for Anti-Slip Floor and Deck Coatings: Our Water-Based Epoxy Surface Primer is a low odor, low VOC, two component provide that provides excellent adhesion for applications over Concrete, Wood, Tile, and other porous surfaces. Ideal for use in kitchens, hospitals, bottling plants and places sensitive to odors during application. Clear in color.

GRIPSUR Metal Primer for Anti-Slip Floor and Deck Coatings: Our Metal Primer is a two component general purpose epoxy primer that provides excellent adhesion for anti-slip flooring and deck coatings on non-porous surfaces such as metal or fiber-glass. Suitable for industrial environments. Available in gray or black.

GRIPSUR Rust Inhibitor Metal Primer: Military grade epoxy primer that offers corrosion protection and promotes adhesion to the substrate for applications in demanding marine and industrial environments. Available in gray, black or buff.



BCA CONSTRUCTION
SPECIALTIES

DIRECT-TO-METAL



GRIPSUR®

SELF-PRIMING NON-SKID

BCA CONSTRUCTION
SPECIALTIES

DOT Formula

Direct-to-Metal



GRIPSUR®

SELF-PRIMING NON-SKID

BCA CONSTRUCTION
SPECIALTIES

PED Formula

Direct-to-Metal



GET A GRIP ON SAFETY



GRIPSUR
SELF-PRIMING NON-SKID
BCA CONSTRUCTION
SPECIALTIES



BCA CONSTRUCTION
SPECIALTIES



GRIPSUR
SELF-PRIMING NON-SKID
BCA CONSTRUCTION
SPECIALTIES

DOT Formula

Direct-to-Metal

PED Formula

Direct-to-Metal

GRIPSUR® PED DTM is a single component, modified epoxy. Ideal for light rolling and heavy pedestrian traffic and is self priming on metal surfaces. Easy to apply and offers excellent adhesion. It can be used on concrete, wood, fiberglass and other surfaces with the use of a primer. ***Unused material can be resealed for later use!***

GRIPSUR® DOT DTM is a two-component epoxy and offers heavy-duty protection under the harshest environments. Ideal for high-volume vehicular and pedestrian traffic.

GRIPSUR® DTM coatings advance public safety and reduces exposure to slip and fall claims. GRIPSUR® DTM eliminates the need to prime metal surfaces, allowing our customers to reduce material and labor costs. A one-step application process for years of durability and protection.

Available in:

- Light Gray
- Medium Gray
- Beige
- Safety Yellow
- Black



DOT DTM Specifications

Theoretical coverage with roller:
40 sq. ft. per gallon
Dry time at 70° F
12 hrs. light traffic, 24 hrs. heavy traffic
COF: Dry - 1.05, Wet - 1.05

PED DTM Specifications

Theoretical coverage with roller:
75 sq. ft. per gallon
Dry time at 70° F
12 hrs. light traffic, 24 hrs. heavy traffic
COF: Dry - 1.2, Wet - 1.0

*Custom Colors Upon Request

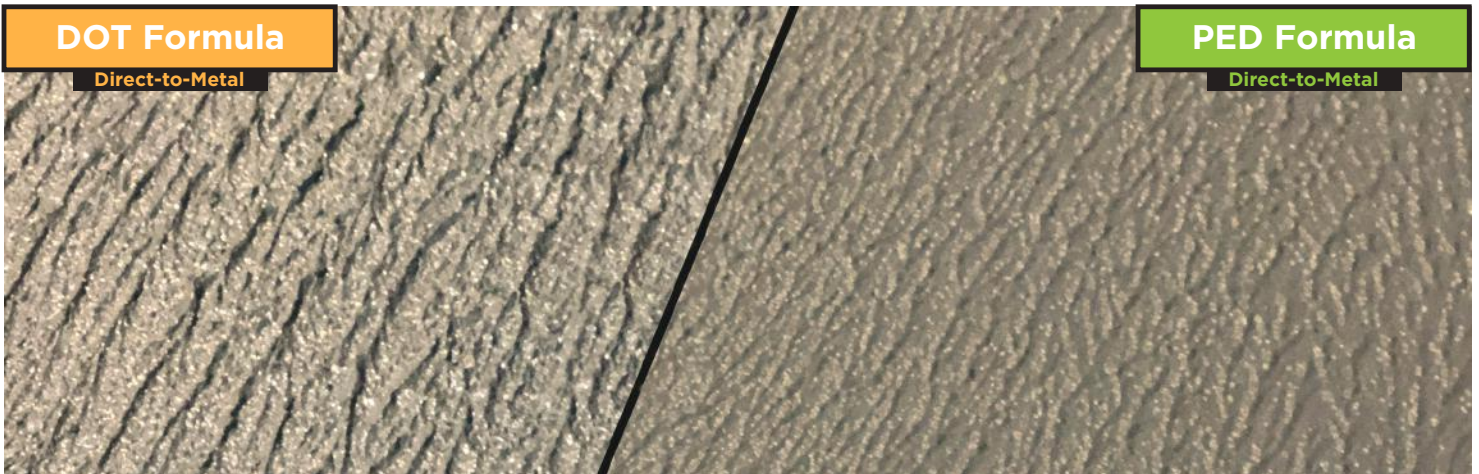
- Heavy Duty protection for areas with rolling vehicular and pedestrian traffic
- Withstands extreme impact under the harshest environments
- Suitable for marine and industrial environments. Resistant to salt water
- Resistant to oil, gasoline, acids, caustics, hydraulic fluids, alcohol and most solvents
- Fire retardant when dry
- Exceeds OSHA, ADA and DOT Coefficient of Friction specifications - Wet or Dry

DOT Formula

Direct-to-Metal

PED Formula

Direct-to-Metal



(914) 612-4990

www.gripsurcoatings.com

GET A GRIP ON SAFETY

GRIPSUR PED DTM Anti-Slip Coating

Light Rolling Traffic and Pedestrian Grade Single Component Direct-To-Metal Epoxy Floor and Deck Coating

Product Description

GRIPSUR PED DTM is a single component modified epoxy direct-to-metal anti-slip floor and deck coating engineered to resist light rolling traffic and heavy pedestrian traffic. It is self-priming on metal surfaces, easy to apply and offers excellent adhesion. It can be used on concrete, wood, fiberglass and other surfaces with the use of a primer. GRIPSUR PED DTM is easy and economical to use since it is a one component product and can be resealed for future use. GRIPSUR PED DTM resists oil, gasoline, acids, caustics and most solvents. GRIPSUR PED DTM has been formulated to meet the strict requirements of South Coast Air Quality Management District Rule 1113. GRIPSUR PED DTM is USDA acceptable.

Surface Preparation

Concrete: Remove oil, grease, dirt, or other surface contaminants using a commercial grade cleaner/degreaser. Flush the area with water to remove any residues and allow to dry. Remove any paint, laitance or loose concrete by scarification or blasting. Smooth or glazed surfaces should be roughened to improve adhesion. New concrete should be cured for at least 30 days prior to application. All release agents, hardeners or sealers must also be removed as they may interfere with adhesion. Prime with GRIPSUR WB Epoxy Surface Primer.

Metal: All surfaces must be clean, dry and free of surface contamination. The surface should be prepared to a minimum Commercial Blast per SSPC-SP 6. Coat clean surface immediately with GRIPSUR PED DTM.

Wood/Fiberglass: Remove oil, grease, dirt, or other surface contaminants using a commercial grade cleaner/degreaser. Flush the area with water to remove any residues and allow to dry. Sand the surface to remove loose material and to create a surface profile for application. Prime wooden surfaces with GRIPSUR WB Epoxy Surface Primer. Prime fiberglass surfaces with GRIPSUR Metal Primer.

Application

GRIPSUR PED DTM is designed to be self-priming on metal substrates.

Mixing should be done with a mechanical mixer such as a pneumatic drill motor with a Jiffy® mixing blade until contents are a uniform color.

Apply at surface temperatures between 50°F (10°C) and 120°F (49°C). Application below 50°F (10°C) is not recommended. Protect exterior applications from rain for at least 24 hours. High humidity will retard drying.

Application Techniques

Roller: The best anti-slip characteristics are obtained when the product is applied by roller. For best results, do not thin and apply using a phenolic core roller on even surfaces. On irregular surfaces use a bristle core roller or short nap roller.

To roll, pour a strip of the anti-slip coating approximately 2" long and 6" wide on the surface being coated. Roll by pulling the material toward you in slow straight strokes. Roll material in one direction only.

Use a modest amount of downward pressure on the roller. It is important that the rolled profile expose the maximum amount of non-slip aggregate. If the aggregate is not properly exposed, the coating may become slippery when wet. Make sure coating is even without any thick puddles. If the coating is too heavy, it may not cure properly.



GRIPSUR PED DTM Anti-Slip Coating

Light Rolling Traffic and Pedestrian Grade Single Component Direct-To-Metal Epoxy Floor and Deck Coating

Application Techniques

Spray: This coating can be sprayed using Mastic Spray Equipment. Sprayed applications will provide a uniform appearance with good anti-slip properties.

To spray, use a minimum of a 5 gallon bottom outlet pressure pot equipped with a double regulator and air driven agitator with a 1" I.D. outlet pipe.

Use a maximum of 25' of 3/8" hose for air and a maximum of 25' of 3/4" hose for the material.

The spray gun should be equipped with a 1/4" fluid nozzle and a 1/4" internal air cap.

Minimum air supply is 20 CFM at 90 lbs. pressure.

Material pressure should be 15-20 psi.

Fluid pressure should be 20-25 psi.

Maintain constant agitation of the product to insure the aggregate does not settle out during application.

Spray at a distance of 16"-24" from the surface.

Trowel: GRIPSUR PED DTM may be applied with a smooth trowel such as a flexible plasterer's finishing trowel. Use a trowel of about 4" by 12" for best results. Pour a strip of GRIPSUR PED DTM on the surface approximately 2" long and 6" wide. Hold the trowel at a 45° degree angle to the surface and spread with a full motion. Reverse the angle of the trowel for an opposite stroke. Pull the material toward you to give the proper appearance.

Surface Maintenance

Maintain a clean surface to ensure the maximum performance from the anti-slip coating. The following cleaning procedure is recommended:

Foreign matter such as chewing gum should be removed with a scraper or putty knife.

Use an all purpose biodegradable cleaner/degreaser mixed with water to clean the surface. Scrub the surface with a long handled, fiber bristled brush or floor machine.

Rinse with clean water and dry.

Note: While Manufacturer's anti-slip coatings are very durable, they are not a permanent coating solution and will require occasional touch up, especially in heavy traffic areas.

Safety precautions: This product is intended for professional use in an industrial environment only. Consult the Safety Data Sheet prior to application.

GRIPSUR PED DTM Anti-Slip Coating

Light Rolling Traffic and Pedestrian Grade Single Component Direct-To-Metal Epoxy Floor and Deck Coating

Standard Colors

Medium Gray, Light Gray, Beige, Safety Yellow and Black. Custom colors are available and subject to minimum order requirements. Contact our customer service department for more information (914) 612-4990.

Medium Gray:	600D52
Light Gray:	600D73
Beige:	600T25
Safety Yellow:	600Y25
Black:	600K40

Specifications

VOC:	2.07 lbs/gal (248 grams/liter)
Solids by Volume:	62 +/- 2%
Dry Time @70°F (21°C):	Light Traffic: 12 hours Heavy Traffic: 24 hours Full Cure: 7-10 days
Theoretical Coverage:	75 ft ² /gallon (roller), 60 ft ² /gallon (trowel), 90 ft ² /gallon (sprayed)
Coefficient of Friction ASTM F609:	Dry: 1.2 Wet: 1.0
Packaging:	1 gallon and 5 gallon
Shelf life:	2 Years

Date

01/2019



RAMPS & WALKWAYS



DECKS



GARAGES



COMMERCIAL ENTRANCES



SCHOOLS



MACHINE SHOPS



STEP BUMPERS



MANUFACTURING FACILITIES

Manufacturer warrants that its products meet its internal specifications and are of merchantable quality. However, the purchaser is solely responsible for the suitability of the product for any particular application. The purchaser should test or qualify the product for serviceability, environmental compliance and health and safety factors prior to use. Further, our total liability is limited to the price of the product or its replacement in kind.

GRIPSUR DOT DTM Anti-Slip Coating

Vehicular Grade Direct-To-Metal Two-Component Epoxy Floor and Deck Coating

Product Description

GRIPSUR DOT DTM is a two-component Direct-To-Metal epoxy anti-slip floor and deck coating engineered to offer anti-slip protection in areas with rolling vehicular and heavy pedestrian traffic. GRIPSUR DOT DTM is suitable for marine and industrial environments. It is self-priming on metal surfaces, easy to apply and offers excellent adhesion. It can also be used on concrete, wood, fiberglass and other surfaces with the use of a primer. GRIPSUR DOT DTM has excellent chemical resistance to oil, gasoline, acids, caustics, hydraulic fluids and most solvents. GRIPSUR DOT DTM has self extinguishing properties in its cured state. GRIPSUR DOT DTM has been formulated to meet the strict requirements of South Coast Air Quality Management District Rule 1113. GRIPSUR DOT DTM is USDA acceptable.

Surface Preparation

Concrete: Remove oil, grease, dirt, or other surface contaminants using a commercial grade cleaner/degreaser. Flush the area with water to remove any residues and allow to dry. Remove any paint, laitance or loose concrete by scarification or blasting. Smooth or glazed surfaces should be roughened to improve adhesion. New concrete should be cured for at least 30 days prior to application. All release agents, hardeners or sealers must also be removed as they may interfere with adhesion. Prime the clean, dry surface with GRIPSUR WB Epoxy Surface Primer.

Metal: All surfaces must be clean, dry and free of surface contamination. The surface should be prepared to a minimum Commercial Blast per SSPC-SP 6. Coat surfaces immediately with GRIPSUR DOT DTM anti-slip coating.

Wood/Fiberglass: Remove oil, grease, dirt, or other surface contaminants using a commercial grade cleaner/degreaser. Flush the area with water to remove any residues and allow to dry. Sand the surface to remove loose material and to create a surface profile for application. Prime wooden surfaces with GRIPSUR WB Epoxy Surface Primer. Prime fiberglass surfaces with GRIPSUR Metal Primer.

Application

GRIPSUR DOT DTM is designed to be self-priming on metal substrates.

Mixing should be done with a mechanical mixer such as a pneumatic drill motor with a Jiffy® mixing blade. Premix the base component for several minutes making sure all material is lifted off the bottom and uniformly mixed. Pour the entire contents of the hardener container into the base component. Mix thoroughly as described above for 3-5 minutes until contents are a uniform color.

Apply at surface temperatures between 50°F (10°C) and 130°F (54°C). Application below 50°F (10°C) is not recommended as material may not cure properly. Protect exterior applications from rain for at least 24 hours.

Application Techniques

Roller: The best anti-slip characteristics are obtained when the product is applied by roller. For best results, do not thin and apply using a phenolic core roller on even surfaces. On irregular surfaces use a bristle core roller or short nap roller.

To roll, pour a strip of the anti-slip coating approximately 2" long and 6" wide on the surface being coated. Roll by pulling the material toward you in slow straight strokes. Roll material in one direction only.

GRIPSUR DOT DTM Anti-Slip Coating

Vehicular Grade Direct-To-Metal Two-Component Epoxy Floor and Deck Coating

Application Techniques

Roller: Use a modest amount of downward pressure on the roller. It is important that the rolled profile expose the maximum amount of non-slip aggregate. If the aggregate is not properly exposed, the coating may become slippery when wet. Make sure coating is even without any thick puddles. If the coating is too heavy, it may not cure properly.

Spray: This coating can be sprayed using Mastic Spray Equipment. Sprayed applications will provide a uniform appearance with good anti-slip properties.

To spray, use a minimum of a 5 gallon bottom outlet pressure pot equipped with a double regulator and air driven agitator with a 1" I.D. outlet pipe.

Use a maximum of 25' of 3/8" hose for air and a maximum of 25' of 3/4" hose for the material.

The spray gun should be equipped with a 1/4" fluid nozzle and a 1/4" internal air cap.

Minimum air supply is 20 CFM at 90 lbs. pressure.

Material pressure should be 15-20 psi.

Fluid pressure should be 20-25 psi.

Maintain constant agitation of the product to insure the aggregate does not settle out during application.

Spray at a distance of 16"-24" from the surface.

Trowel: GRIPSUR DOT DTM may be applied with a smooth trowel such as a flexible plasterer's finishing trowel. Use a trowel of about 4" by 12" for best results. Pour a strip of GRIPSUR DOT DTM on the surface approximately 2" long and 6" wide. Hold the trowel at a 45° degree angle to the surface and spread with a full motion. Reverse the angle of the trowel for an opposite stroke. Pull the material toward you to give the proper appearance.

Surface Maintenance

Maintain a clean surface to ensure the maximum performance from the anti-slip coating. The following cleaning procedure is recommended:

Foreign matter such as chewing gum should be removed with a scraper or putty knife.

Use an all purpose biodegradable cleaner/degreaser mixed with water to clean the surface. Scrub the surface with a long handled, fiber bristled brush or floor machine.

Rinse with clean water and dry.

GRIPSUR DOT DTM Anti-Slip Coating

Vehicular Grade Direct-To-Metal Two-Component Epoxy Floor and Deck Coating

Surface Maintenance

Note: While Manufacturer's anti-slip coatings are very durable, they are not a permanent coating solution and will require occasional touch up, especially in heavy traffic areas.

Safety precautions: This product is intended for professional use in an industrial environment only. Consult the Safety Data Sheet prior to application.

Standard Colors

GRIPSUR DOT DTM standard colors: Medium Gray, Light Gray, Beige, Safety Yellow and Black. Custom colors are available and subject to minimum order requirements. Contact our customer service department for more information (914) 612-4990

Medium Gray:	600D61
Light Gray:	600D83
Beige:	600T30
Safety Yellow:	600Y30
Black:	600K35
Solid with hardener:	610C06

Specifications

VOC:	2.07 lbs/gal (248 grams/liter)
Solids by Volume:	62 +/- 2%
Dry Time @70°F (21°C):	Light Traffic: 12 hours Heavy Traffic: 24 hours Full Cure: 7-10 days
Theoretical Coverage:	40 ft ² /gallon (roller), 50 ft ² /gallon (trowel), 60 ft ² /gallon (sprayed)
Coefficient of Friction ASTM F609:	Dry: 1.05 Wet: 1.05
Packaging:	5 gallon kit
Pot life @70°F (21°C):	4 hours
Shelf life:	2 Years

Date

01/2019



RAMPS



WALKWAYS
& STAIRS



FORKLIFT
AREAS



LOADING DOCKS



STADIUMS



SHIPS &
WORK BOATS



PRINTING
PLANTS



TAILGATES



CHEMICAL
PROCESSING



TRANSIT
SYSTEMS



MACHINE
SHOPS



MARINAS

Manufacturer warrants that its products meet its internal specifications and are of merchantable quality. However, the purchaser is solely responsible for the suitability of the product for any particular application. The purchaser should test or qualify the product for serviceability, environmental compliance and health and safety factors prior to use. Further, our total liability is limited to the price of the product or its replacement in kind.



BCA CONSTRUCTION
SPECIALTIES

GRIPSUR MARINE



GRIPSUR

MARINE I

NON-SKID COATINGS



GRIPSUR

MARINE II

NON-SKID COATINGS





GRIPSUR

MARINE I

NON-SKID COATINGS



BCA CONSTRUCTION
SPECIALTIES

47 Purdy Avenue
Port Chester, NY 10573
914.612.4990



GRIPSUR

MARINE II

NON-SKID COATINGS

MARINE I is a single component, modified epoxy anti-slip floor and deck coating. Engineered to resist light rolling and heavy pedestrian traffic. Offers excellent adhesion to concrete, wood, and metal surfaces.

Unused material can be resealed for later use!

MARINE II is a two-component heavy duty epoxy coating. Engineered to offer anti-slip protection under the harshest environments. Offers excellent adhesion to concrete, wood and metal surfaces. Offers excellent resistance to oil, gas, acids, caustics, hydraulic fluids, salt water, detergents, alcohol and most solvents!

Suitable for marine and industrial environments!

Available in:

- Medium Gray
- Beige
- Safety Yellow
- Black



MARINE I Specifications

Theoretical coverage with roller:
75 sq. ft. per gallon
Dry time at 70° F
12 hrs. light traffic, 48 hrs. heavy traffic
COF: Dry - 1.2, Wet - 1.0

MARINE II Specifications

Theoretical coverage with roller:
40 sq. ft. per gallon
Dry time at 70° F
12 hrs. light traffic, 48 hrs. heavy traffic
COF: Dry - 1.05, Wet - 1.05

*Custom Colors Upon Request

- **Ideal for: Work Boats, Ferries, Barges, Ramps, Port Operations, Oil Platforms and Helipads**
- **Offers excellent resistance to oil, gasoline, acids, caustics, hydraulic fluids, alcohol, detergent, salt water and most solvents**
- **Exceeds OSHA, ADA and DOT Coefficient of Friction specifications - Wet or Dry**



(914) 612-4990
www.gripsurcoatings.com

GET A GRIP ON SAFETY

GRIPSUR MARINE I Anti-Slip Coating

Single Component Modified Epoxy Floor and Deck Coating

Product Description

GRIPSUR MARINE I is a single component modified epoxy anti-slip floor and deck coating engineered to resist heavy pedestrian traffic. It is easy to apply and offers excellent adhesion to concrete, wood and metal surfaces. GRIPSUR MARINE I is easy and economical to use since it is a one component product and can be resealed for future use. GRIPSUR MARINE I resists oils, gasoline, acids, caustics, salt water and most solvents.

GRIPSUR MARINE I has been formulated to meet the strict requirements of South Coast Quality Management District Rule 1113.

Surface Preparation

Concrete: Remove oil, grease, dirt, or other surface contaminants using a commercial grade cleaner/degreaser. Flush the area with water to remove any residues and allow to dry. Remove any paint, laitance or loose concrete by scarification or blasting. Smooth or glazed surfaces should be roughened to improve adhesion. New concrete should be cured for at least 30 days prior to application. All release agents, hardeners or sealers must also be removed as they may interfere with adhesion. Prime the clean, dry surface with GRIPSUR WB Epoxy Surface Primer.

Metal: All surfaces must be clean, dry and free of surface contamination. The surface should be prepared to a minimum Commercial Blast per SSPC-SP 6. Prime blasted surfaces immediately with GRIPSUR Metal Primer to prevent flash rust.

Wood/Fiberglass: Remove oil, grease, dirt, or other surface contaminants using a commercial grade cleaner/degreaser. Flush the area with water to remove any residues and allow to dry. Sand the surface to remove loose material and to create a surface profile for application. Prime wooden surfaces with GRIPSUR WB Epoxy Surface Primer. Prime fiberglass surfaces with GRIPSUR Metal Primer.

Application

GRIPSUR MARINE I is designed to be applied over a primer or sealer.

Mixing should be done with a mechanical mixer such as a pneumatic drill motor with a Jiffy® mixing blade until contents are a uniform color.

Apply at surface temperatures between 50°F (10°C) and 120°F (49°C). Application below 50°F (10°C) is not recommended. Protect exterior applications from rain for at least 24 hours. High humidity will retard drying.

Application Techniques

Roller: The best anti-slip characteristics are obtained when the product is applied by roller. For best results, do not thin and apply using a phenolic core roller on even surfaces. On irregular surfaces use a bristle core roller or short nap roller.

GRIPSUR MARINE I Anti-Slip Coating

Single Component Modified Epoxy Floor and Deck Coating

To roll, pour a strip of the anti-slip coating approximately 2" long and 6" wide on the surface being coated. Roll by pulling the material toward you in slow straight strokes. Roll material in one direction only.

Use a modest amount of downward pressure on the roller. It is important that the rolled profile expose the maximum amount of non-slip aggregate. If the aggregate is not properly exposed, the coating may become slippery when wet. Make sure coating is even without any thick puddles. If the coating is too heavy, it may not cure properly..

Spray: This coating can be sprayed using Mastic Spray Equipment. Sprayed applications will provide a uniform appearance with good anti-slip properties.

To spray, use a minimum of a 5 gallon bottom outlet pressure pot equipped with a double regulator and air driven agitator with a 1" I.D. outlet pipe.

Use a maximum of 25' of 3/8" hose for air and a maximum of 25' of 3/4" hose for the material.

The spray gun should be equipped with a 1/4" fluid nozzle and a 1/4" internal air cap.

Minimum air supply is 20 CFM at 90 lbs. pressure.

Material pressure should be 15-20 psi.

Fluid pressure should be 20-25 psi.

Maintain constant agitation of the product to insure the aggregate does not settle out during application.

Spray at a distance of 16"-24" from the surface.

Trowel: GRIPSUR MARINE I may be applied with a smooth trowel such as a flexible plasterer's finishing trowel. Use a trowel of about 4" by 12" for best results. Pour a strip of GRIPSUR MARINE I on the surface approximately 2" long and 6" wide. Hold the trowel at a 45° degree angle to the surface and spread with a full motion. Reverse the angle of the trowel for an opposite stroke. Pull the material toward you to give the proper appearance.

Surface Maintenance

Maintain a clean surface to ensure the maximum performance from the anti-slip coating. The following cleaning procedure is recommended:

Foreign matter such as chewing gum should be removed with a scraper or putty knife.

Use an all purpose biodegradable cleaner/degreaser mixed with water to clean the surface. Scrub the surface with a long handled, fiber bristled brush or floor machine.

Rinse with clean water and dry.

GRIPSUR MARINE I Anti-Slip Coating

Single Component Modified Epoxy Floor and Deck Coating

Note: While BCA Construction Specialties, Inc. anti-slip coatings are very durable, they are not a permanent coating solution and will require occasional touch up, especially in heavy traffic areas.

Safety precautions: This product is intended for professional use in an industrial environment only. Consult the Safety Data Sheet prior to application.

Trowel: GRIPSUR MARINE I may be applied with a smooth trowel such as a flexible plasterer's finishing trowel. Use a trowel of about 4" by 12" for best results. Pour a strip of GRIPSUR MARINE I on the surface approximately 2" long and 6" wide. Hold the trowel at a 45° degree angle to the surface and spread with a full motion. Reverse the angle of the trowel for an opposite stroke. Pull the material toward you to give the proper appearance.

Standard Colors

Black, Medium Gray, Tile Red, Beige, and Safety Yellow. Custom colors are available and subject to minimum order requirements. Contact our customer service department for more information: (914) 612-4990.

Black:	600K06
Medium Gray:	600D18
Tile Red:	600R02
Beige:	600T01
Safety Yellow:	600Y03

Specifications

VOC:	2.07 lbs/gal (248 grams/liter)
Solids by Volume:	62 +/- 2%
Dry Time @70°F (21°C):	Light Traffic: 12 hours Heavy Traffic: 48 hours Full Cure: 7-10 days
Theoretical Coverage:	75 ft ² /gallon (roller), 60 ft ² /gallon (trowel), 90 ft ² /gallon (sprayed)
Coefficient of Friction ASTM F609:	Dry: 1.2 Wet: 1.0
Packaging:	1 gallon and 5 gallon
Shelf life:	2 Years

Date

01/2020



RAMPS & WALKWAYS



BOAT DECKS



SHIPS & WORK BOATS



MARINAS



LOADING DOCKS



OIL PLATFORMS



TRANSIT SYSTEMS



HELIPORTS



FERRIES & BARGES

Manufacturer warrants that its products meet its internal specifications and are of merchantable quality. However, the purchaser is solely responsible for the suitability of the product for any particular application. The purchaser should test or qualify the product for serviceability, environmental compliance and health and safety factors prior to use. Further, our total liability is limited to the price of the product or its replacement in kind.

GRIPSUR MARINE II Anti-Slip Coating

Two Component Epoxy Floor and Deck Coating

Product Description

GRIPSUR MARINE II is a two component epoxy anti-slip floor and deck coating engineered to offer anti-slip protection in areas with rolling vehicular and heavy pedestrian traffic.

GRIPSUR MARINE II is suitable for marine and industrial environments. It is easy to apply and offers excellent adhesion to concrete, wood and metal surfaces.

GRIPSUR MARINE II has excellent chemical resistance to oil, gasoline, acids, caustics, hydraulic fluids, alcohol, detergent, salt water and most solvents.

GRIPSUR MARINE II has self extinguishing properties in its cured state.

GRIPSUR MARINE II has been formulated to meet the strict requirements of South Coast Air Quality Management District Rule 1113. GRIPSUR MARINE II is USDA acceptable.

Surface Preparation

Concrete: Remove oil, grease, dirt, or other surface contaminants using a commercial grade cleaner/degreaser. Flush the area with water to remove any residues and allow to dry. Remove any paint, laitance or loose concrete by scarification or blasting. Smooth or glazed surfaces should be roughened to improve adhesion. New concrete should be cured for at least 30 days prior to application. All release agents, hardeners or sealers must also be removed as they may interfere with adhesion. Prime the clean dry surface with GRIPSUR WB Epoxy Surface Primer.

Metal: All surfaces must be clean, dry and free of surface contamination. The surface should be prepared to a minimum Commercial Blast per SSPC-SP 6. Prime blasted surfaces immediately with GRIPSUR Metal Primer to prevent flash rust.

Wood/Fiberglass: Remove oil, grease, dirt, or other surface contaminants using a commercial grade cleaner/degreaser. Flush the area with water to remove any residues and allow to dry. Sand the surface to remove loose material and to create a surface profile for application. Prime wooden surfaces with GRIPSUR WB Epoxy Surface Primer. Prime fiberglass surfaces with GRIPSUR Metal Primer.

Application

GRIPSUR MARINE II is designed to be applied over a primer or sealer.

Mixing should be done with a mechanical mixer such as a pneumatic drill motor with a Jiffy® mixing blade. Premix the base component for several minutes making sure all material is lifted off the bottom and uniformly mixed. Pour the entire contents of the hardener container into the base component. Mix thoroughly as described above for 3-5 minutes until contents are a uniform color. Apply at surface temperatures between 50°F (10°C) and 130°F (54°C). Application below 50°F (10°C) is not recommended as material may not cure properly. Protect exterior applications from rain for at least 24 hours.

GRIPSUR MARINE II Anti-Slip Coating

Two Component Epoxy Floor and Deck Coating

Application Techniques

Roller: The best anti-slip characteristics are obtained when the product is applied by roller. For best results, do not thin and apply using a phenolic core roller on even surfaces. On irregular surfaces use a bristle core roller or short nap roller.

To roll, pour a strip of the anti-slip coating approximately 2" long and 6" wide on the surface being coated. Roll by pulling the material toward you in slow straight strokes. Roll material in one direction only.

Use a modest amount of downward pressure on the roller. It is important that the rolled profile expose the maximum amount of non-slip aggregate. If the aggregate is not properly exposed, the coating may become slippery when wet. Make sure coating is even without any thick puddles. If the coating is too heavy, it may not cure properly.

Spray: This coating can be sprayed using Mastic Spray Equipment. Sprayed applications will provide a uniform appearance with good anti-slip properties. To spray, use a minimum of a 5 gallon bottom outlet pressure pot equipped with a double regulator and air driven agitator with a 1" I.D. outlet pipe. Use a maximum of 25' of 3/8" hose for air and a maximum of 25' of 3/4" hose for the material. The spray gun should be equipped with a 1/4" fluid nozzle and a 1/4" internal air cap.

Minimum air supply is 20 CFM at 90 lbs. pressure.

Material pressure should be 15-20 psi.

Fluid pressure should be 20-25 psi.

Maintain constant agitation of the product to insure the aggregate does not settle out during application. Spray at a distance of 16"-24" from the surface.

Trowel: GRIPSUR MARINE II may be applied with a smooth trowel such as a flexible plasterer's finishing trowel. Use a trowel of about 4" by 12" for best results. Pour a strip of GRIPSUR MARINE II on the surface approximately 2" long and 6" wide. Hold the trowel at a 45° degree angle to the surface and spread with a full motion. Reverse the angle of the trowel for an opposite stroke. Pull the material toward you to give the proper appearance.

Surface Maintenance

Maintain a clean surface to ensure the maximum performance from the anti-slip coating. The following cleaning procedure is recommended: Foreign matter such as chewing gum should be removed with a scraper or putty knife. Use an all purpose biodegradable cleaner/degreaser mixed with water to clean the surface. Scrub the surface with a long handled, fiber bristled brush or floor machine. Rinse with clean water and dry.

Note: While BCA Construction Specialties, Inc. anti-slip coatings are very durable, they are not a permanent coating solution and will require occasional touch up, especially in heavy traffic areas.

Safety precautions: This product is intended for professional use in an industrial environment only. Consult the Safety Data Sheet prior to application.

GRIPSUR MARINE II Anti-Slip Coating

Two Component Epoxy Floor and Deck Coating

Standard Colors

Black, Medium Gray, Tile Red, and Safety Yellow. Custom colors are available and subject to minimum order requirements. Contact our customer service department for more information (914) 612-4990.

Black:	600K02
Tile Red:	600R07
Medium Gray:	600D16
Safety Yellow:	600Y06
Sold with hardener	610C06

Specifications

VOC:	2.07 lbs/gal (248 grams/liter)
Solids by Volume:	68 +/- 2%
Dry Time @70°F (21°C):	Light Traffic: 12 hours Heavy Traffic: 48 hours Full Cure: 7-10 days
Theoretical Coverage:	40 ft ² /gallon (roller), 50 ft ² /gallon (trowel), 60 ft ² /gallon (sprayed)
Coefficient of Friction ASTM F609:	Dry: 1.05 Wet: 1.05
Packaging:	1 gallon kit and 5 gallon kit
Pot life @70°F (21°C):	4 hours
Shelf life:	2 Years

Date

01/2020



RAMPS



WALKWAYS
& STAIRS



FORKLIFT
AREAS



LOADING
DOCKS



SHIPS &
WORK BOATS



TRANSIT
SYSTEMS



MARINAS



OIL
PLATFORMS



HELIPORTS



FERRIES
& BARGES

Manufacturer warrants that its products meet its internal specifications and are of merchantable quality. However, the purchaser is solely responsible for the suitability of the product for any particular application. The purchaser should test or qualify the product for serviceability, environmental compliance and health and safety factors prior to use. Further, our total liability is limited to the price of the product or its replacement in kind.



BCA CONSTRUCTION
SPECIALTIES

TECHNICAL DATA SHEETS



- GRIPSUR REC ACRYLIC
- GRIPSUR REC BAREFOOT



- GRIPSUR PED



- GRIPSUR DOT
- GRIPSUR DOT 2500 100% SOLIDS



- GRIPSUR RUST INHIBITOR PRIMER
- GRIPSUR WB EPOXY SURFACE PRIMER
- GRIPSUR ACRYLIC PRIMER

GET A GRIP ON SAFETY

GRIPSUR REC ACRYLIC Anti-Slip Coating

Pedestrian Grade Elastomeric Acrylic Floor and Deck Coating

Product Description

GRIPSUR REC ACRYLIC is a single component water-based flexible acrylic anti-slip floor and deck coating formulated for pedestrian traffic. It is easy to apply and offers excellent adhesion to asphalt, concrete, wood and metal surfaces. GRIPSUR REC ACRYLIC is easy to clean up, economical to use and since it is one component, it can be resealed and saved for future use.

GRIPSUR REC ACRYLIC has been formulated to meet the strict requirements of South Coast Air Quality Management District Rule 1113. GRIPSUR REC ACRYLIC is USDA acceptable.

Surface Preparation

Concrete: Remove oil, grease, dirt, or other surface contaminants using a commercial grade cleaner/degreaser.

Flush the area with water to remove any residues and allow to dry. Remove any paint, laitance or loose concrete by scarification or blasting. Smooth or glazed surfaces should be roughened to improve adhesion. New concrete should be cured for at least 30 days prior to application. All release agents, hardeners or sealers must also be removed as they may interfere with adhesion. Prime the clean, dry surface with GRIPSUR WB Epoxy Surface Primer.

Asphalt: Sweep the surface to remove all loose contaminants. Remove oil, grease, dirt, or other surface contaminants using a commercial grade cleaner/degreaser. Flush the area with water to remove any residues and allow to dry. Prime the clean, dry surface with BCA Acrylic Primer.

Metal: All surfaces must be clean, dry and free of surface contamination. The surface should be prepared to a minimum Commercial Blast per SSPC-SP 6. Prime blasted surfaces immediately with GRIPSUR Metal Primer to prevent flash rust.

Wood/Fiberglass: Remove oil, grease, dirt, or other surface contaminants using a commercial grade cleaner/degreaser. Flush the area with water to remove any residues and allow to dry. Sand the surface to remove loose material and to create a surface profile for application. Prime wooden surfaces with GRIPSUR WB Epoxy Surface Primer. Prime fiberglass surfaces with GRIPSUR Metal Primer.

Application

GRIPSUR REC ACRYLIC is designed to be applied over a primer or sealer.

Mixing should be done with a mechanical mixer such as a pneumatic drill motor with a Jiffy® mixing blade until contents are a uniform color.

Apply at surface temperatures between 50°F (10°C) and 120°F (49°C). Application below 50°F (10°C) is not recommended. Protect exterior applications from rain for at least 24 hours. High humidity will retard drying.

Application Techniques

Roller: The best anti-slip characteristics are obtained when the product is applied by roller. For best results, do not thin and apply using a phenolic core roller on even surfaces. On irregular surfaces use a bristle core roller or short nap roller.

To roll, pour a strip of GRIPSUR REC ACRYLIC approximately 2" long and 6" wide on the surface. Roll by pulling the material toward you in slow straight strokes. Roll material in one direction only.



GRIPSUR REC ACRYLIC Anti-Slip Coating

Pedestrian Grade Elastomeric Acrylic Floor and Deck Coating

Application Techniques

Roller: Use a modest amount of downward pressure on the roller. It is important that the rolled profile expose the maximum amount of non-slip aggregate. If the aggregate is not properly exposed, the coating may become slippery when wet. Make sure coating is even without any thick puddles. If the coating is too heavy, it may not cure properly.

Spray: GRIPSUR REC ACRYLIC can be sprayed using Mastic Spray Equipment. Sprayed applications will provide a uniform appearance with good anti-slip properties.

To spray, a minimum of a 5 gallon bottom outlet pressure pot equipped with a double regulator and air driven agitator with a 1" I.D. outlet pipe.

Use a maximum of 25' of 3/8" hose for air and a maximum of 25' of 3/4" hose for the material.

The spray gun should be equipped with a 1/4" fluid nozzle and a 1/4" internal air cap.

Minimum air supply is 20 CFM at 90 lbs. pressure.

Material pressure should be 15-20 psi.

Fluid pressure should be 20-25 psi.

Maintain constant agitation of the product to insure the aggregate does not settle out during application.

Spray at a distance of 16"- 24" from the surface.

Trowel: GRIPSUR REC ACRYLIC may be applied with a smooth trowel such as a plasterer's finishing trowel. Use a trowel about 4" by 12" for best results. Pour a strip of GRIPSUR REC ACRYLIC on the surface approximately 2" long and 6" wide. Hold the trowel at a 45° degree angle to the surface and spread with a full motion. Reverse the angle of the trowel for an opposite stroke. Pull the material toward you to give the proper appearance.

Surface Maintenance

Maintain a clean surface to ensure the maximum performance from the anti-slip coating. The following cleaning procedure is recommended:

Foreign matter such as chewing gum should be removed with a scraper or putty knife.

Use an all purpose biodegradable cleaner/degreaser mixed with water to clean the surface. Scrub the surface with a long handled, fiber bristled brush or floor machine.

Rinse with clean water and dry.

Note: While BCA Construction Specialties, Inc. anti-slip coatings are very durable, they are not a permanent coating solution and will require occasional touch up, especially in heavy traffic areas.

GRIPSUR REC ACRYLIC Anti-Slip Coating

Pedestrian Grade Elastomeric Acrylic Floor and Deck Coating

Safety precautions: This product is intended for professional use in an industrial environment only. Consult the Safety Data Sheet prior to application.

Standard Colors

Black, Gray, Tile Red, Beige, and Safety Yellow. Custom colors are available and subject to minimum order requirements. Contact our customer service department for more information (914) 612-4990.

Black:	600K04
Gray:	600D10
Tile Red:	600R10
Beige:	600T06
Safety Yellow:	600Y09

Specifications

VOC:	0.34 lbs/gal (41 grams/liter)
Solids by Volume:	62 +/- 2%
Dry Time @70°F (21°C):	Light Traffic: 4 hours Heavy Traffic: 24 hours Full Cure: 7-10 days
Theoretical Coverage:	70 ft ² /gallon (roller), 65 ft ² /gallon (trowel), 125 ft ² /gallon (sprayed)
Coefficient of Friction ASTM F609:	Dry: 1.3 Wet: 0.9
Packaging:	1 gallon and 5 gallon
Shelf life:	2 Years

Date

05/2019



**WALKWAY
& AISLES**



**LOCKER
ROOMS**



RAMPS



PLATFORMS



**POOL &
DECK AREAS**

Manufacturer warrants that its products meet its internal specifications and are of merchantable quality. However, the purchaser is solely responsible for the suitability of the product for any particular application. The purchaser should test or qualify the product for serviceability, environmental compliance and health and safety factors prior to use. Further, our total liability is limited to the price of the product or its replacement in kind.

Recreational Barefoot Grade Anti-Slip Coating

Low Profile Two Component Water-Borne Epoxy Floor and Deck Coating

Product Description

GRIPSUR REC Formula is a two component water-based low profile anti-slip floor and deck coating formulated with a fine texture finish. This finish is durable, easy to clean and chemically resistant.

GRIPSUR REC Formula is suitable for recreational, marine and industrial environments. It is easy to apply and adheres to metal, concrete and wood surfaces.

GRIPSUR REC Formula has excellent chemical resistance to oil, gasoline, acids, caustics, hydraulic fluids and most solvents. GRIPSUR REC Formula has self extinguishing properties in its cured state. GRIPSUR REC Formula can also be immersed in salt water.

GRIPSUR REC Formula has been formulated to meet the strict requirements of South Coast Air Quality Management District Rule 1113. GRIPSUR REC Formula is USDA acceptable.

Surface Preparation

Concrete: Remove oil, grease, dirt, or other surface contaminants using a commercial grade cleaner/degreaser. Flush the area with water to remove any residues and allow to dry. Remove any paint, laitance or loose concrete by scarification or blasting. Smooth or glazed surfaces should be roughened to improve adhesion. New concrete should be cured for at least 30 days prior to application. All release agents, hardeners or sealers must also be removed as they may interfere with adhesion. Prime the clean, dry surface with GRIPSUR WB Epoxy Surface Primer.

Metal: All surfaces must be clean, dry and free of surface contamination. The surface should be prepared to a minimum Commercial Blast per SSPC-SP 6. Prime blasted surfaces immediately with GRIPSUR Metal Primer to prevent flash rust.

Wood/Fiberglass: Remove oil, grease, dirt, or other surface contaminants using a commercial grade cleaner/degreaser. Flush the area with water to remove any residues and allow to dry. Sand the surface to remove loose material and to create a surface profile for application. Prime wooden surfaces with GRIPSUR WB Epoxy Surface Primer. Prime fiberglass surfaces with GRIPSUR Metal Primer.

Application

GRIPSUR REC Formula is designed to be applied over a primer or sealer.

Mixing should be done with a mechanical mixer such as a pneumatic drill motor with a Jiffy® mixing blade. Premix the base component for several minutes making sure all material is lifted off the bottom and uniformly mixed. Pour the entire contents of the hardener container into the base component. Mix thoroughly as described above for 3-5 minutes until contents are a uniform color.

Apply at surface temperatures between 50°F (10°C) and 120°F (49°C). Application below 50°F (10°C) is not recommended as it will negatively impact the cure of the product. Protect exterior applications from rain for at least 24 hours.

Recreational Barefoot Grade Anti-Slip Coating

Low Profile Two Component Water-Borne Epoxy Floor and Deck Coating

Application Techniques

Roller: The best anti-slip characteristics are obtained when the product is applied by roller. For best results, do not thin and apply using a phenolic core roller on even surfaces. On irregular surfaces use a bristle core roller or short nap roller.

To roll, pour a strip of the anti-slip coating approximately 2" long and 6" wide on the surface being coated. Roll by pulling the material toward you in slow straight strokes. Roll material in one direction only.

Use a modest amount of downward pressure on the roller. It is important that the rolled profile expose the maximum amount of non-slip aggregate. If the aggregate is not properly exposed, the coating may become slippery when wet. Make sure coating is even without any thick puddles. If the coating is too heavy, it may not dry properly.

Spray: This coating can be sprayed using Mastic Spray Equipment. Sprayed applications will provide a uniform appearance with good anti-slip properties.

To spray, use a minimum of a 5 gallon bottom outlet pressure pot equipped with a double regulator and air driven agitator with a 1" I.D. outlet pipe.

Use a maximum of 25' of 3/8" hose for air and a maximum of 25' of 3/4" hose for the material.

The spray gun should be equipped with a 1/4" fluid nozzle and a 1/4" internal air cap.

Minimum air supply is 20 CFM at 90 lbs. pressure.

Material pressure should be 15-20 psi.

Fluid pressure should be 20-25 psi.

Maintain constant agitation of the product to insure the aggregate does not settle out during application.

Spray at a distance of 16"-24" from the surface.

Surface Maintenance

Maintain a clean surface to ensure the maximum performance from the anti-slip coating. The following cleaning procedure is recommended:

Foreign matter such as chewing gum should be removed with a scraper or putty knife.

Use an all purpose biodegradable cleaner/degreaser mixed with water to clean the surface. Scrub the surface with a long handled, fiber bristled brush or floor machine.

Rinse with clean water and dry.

Recreational Barefoot Grade Anti-Slip Coating

Low Profile Two Component Water-Borne Epoxy Floor and Deck Coating

Note: While BCA Construction Specialties, Inc. anti-slip coatings are very durable, they are not a permanent coating solution and will require occasional touch up, especially in heavy traffic areas.

Safety precautions: This product is intended for professional use in an industrial environment only. Consult the Safety Data Sheet prior to application.

Standard Colors

Medium Gray, Light Gray, Beige, Tile Red and Black. Custom colors are available and subject to minimum order requirements.

Medium Gray:	600D12
Light Gray:	600D14
Beige:	600T02
Tile Red:	600R04
Black:	600K07
Sold with hardener 610C12	

Specifications

VOC:	0.5 lbs/gal (60 grams/liter)
Solids by Volume:	62 +/- 2%
Dry Time @70°F (21°C):	Light Traffic: 24 hours Heavy Traffic: 72 hours Full Cure: 7 days
Theoretical Coverage:	100 ft ² /gallon (roller), 120 ft ² /gallon (sprayed) <i>Note: Bristle core roller coverage will be lower than with phenolic roller</i>
Coefficient of Friction ASTM F609:	Dry: .88 Wet: .85
Packaging:	1 gallon kit and 5 gallon kit
Pot life @70°F (21°C):	1 gallon kit: 45 minutes 5 gallon kit: 20 minutes
Shelf life:	2 Years

Date

04/2019



WALKWAY
& AISLES



WATER &
THEME PARKS



PLEASURE
BOATS



SHOWERS &
LOCKER ROOMS



LAUNDRY
ROOMS



KENNELS
& ZOOS



COMMERCIAL
KITCHENS



POOL &
DECK AREAS

Manufacturer warrants that its products meet its internal specifications and are of merchantable quality. However, the purchaser is solely responsible for the suitability of the product for any particular application. The purchaser should test or qualify the product for serviceability, environmental compliance and health and safety factors prior to use. Further, our total liability is limited to the price of the product or its replacement in kind.

GRIPSUR PED Anti-Slip Coating

Pedestrian Grade Single Component Epoxy Floor and Deck Coating

Product Description

GRIPSUR PED is a single component modified epoxy anti-slip floor and deck coating engineered to resist heavy pedestrian traffic. It is easy to apply and offers excellent adhesion to concrete, wood and metal surfaces. GRIPSUR PED is easy and economical to use since it is a one component product and can be resealed for future use. GRIPSUR PED resists oil, gasoline, acids, caustics and most solvents.

GRIPSUR PED has been formulated to meet the strict requirements of South Coast Air Quality Management District Rule 1113. GRIPSUR PED is USDA acceptable.

Surface Preparation

Concrete: Remove oil, grease, dirt, or other surface contaminants using a commercial grade cleaner/degreaser. Flush the area with water to remove any residues and allow to dry. Remove any paint, laitance or loose concrete by scarification or blasting. Smooth or glazed surfaces should be roughened to improve adhesion. New concrete should be cured for at least 30 days prior to application. All release agents, hardeners or sealers must also be removed as they may interfere with adhesion. Prime the clean, dry surface with GRIPSUR WB Epoxy Surface Primer.

Metal: All surfaces must be clean, dry and free of surface contamination. The surface should be prepared to a minimum Commercial Blast per SSPC-SP 6. Prime blasted surfaces immediately with GRIPSUR Metal Primer to prevent flash rust.

Wood/Fiberglass: Remove oil, grease, dirt, or other surface contaminants using a commercial grade cleaner/degreaser. Flush the area with water to remove any residues and allow to dry. Sand the surface to remove loose material and to create a surface profile for application. Prime wooden surfaces with GRIPSUR WB Epoxy Surface Primer. Prime fiberglass surfaces with GRIPSUR Metal Primer.

Application

GRIPSUR PED is designed to be applied over a primer or sealer.

Mixing should be done with a mechanical mixer such as a pneumatic drill motor with a Jiffy® mixing blade until contents are a uniform color.

Apply at surface temperatures between 50°F (10°C) and 120°F (49°C). Application below 50°F (10°C) is not recommended. Protect exterior applications from rain for at least 24 hours. High humidity will retard drying.

Application Techniques

Roller: The best anti-slip characteristics are obtained when the product is applied by roller. For best results, do not thin and apply using a phenolic core roller on even surfaces. On irregular surfaces use a bristle core roller or short nap roller.

GRIPSUR PED Anti-Slip Coating

Pedestrian Grade Single Component Epoxy Floor and Deck Coating

To roll, pour a strip of the anti-slip coating approximately 2" long and 6" wide on the surface being coated. Roll by pulling the material toward you in slow straight strokes. Roll material in one direction only.

Use a modest amount of downward pressure on the roller. It is important that the rolled profile expose the maximum amount of non-slip aggregate. If the aggregate is not properly exposed, the coating may become slippery when wet. Make sure coating is even without any thick puddles. If the coating is too heavy, it may not cure properly.

Spray: This coating can be sprayed using Mastic Spray Equipment. Sprayed applications will provide a uniform appearance with good anti-slip properties.

To spray, use a minimum of a 5 gallon bottom outlet pressure pot equipped with a double regulator and air driven agitator with a 1" I.D. outlet pipe.

Use a maximum of 25' of 3/8" hose for air and a maximum of 25' of 3/4" hose for the material.

The spray gun should be equipped with a 1/4" fluid nozzle and a 1/4" internal air cap.

Minimum air supply is 20 CFM at 90 lbs. pressure.

Material pressure should be 15-20 psi.

Fluid pressure should be 20-25 psi.

Maintain constant agitation of the product to insure the aggregate does not settle out during application.

Spray at a distance of 16"-24" from the surface.

Trowel: GRIPSUR PED may be applied with a smooth trowel such as a flexible plasterer's finishing trowel. Use a trowel of about 4" by 12" for best results. Pour a strip of GRIPSUR PED on the surface approximately 2" long and 6" wide. Hold the trowel at a 45° degree angle to the surface and spread with a full motion. Reverse the angle of the trowel for an opposite stroke. Pull the material toward you to give the proper appearance.

Surface Maintenance

Maintain a clean surface to ensure the maximum performance from the anti-slip coating. The following cleaning procedure is recommended:

Foreign matter such as chewing gum should be removed with a scraper or putty knife.

Use an all purpose biodegradable cleaner/degreaser mixed with water to clean the surface. Scrub the surface with a long handled, fiber bristled brush or floor machine.

Rinse with clean water and dry.

GRIPSUR PED Anti-Slip Coating

Pedestrian Grade Single Component Epoxy Floor and Deck Coating

Note: While BCA Construction Specialties, Inc. anti-slip coatings are very durable, they are not a permanent coating solution and will require occasional touch up, especially in heavy traffic areas.

Safety precautions: This product is intended for professional use in an industrial environment only. Consult the Safety Data Sheet prior to application.

Standard Colors

Black, Medium Gray, Tile Red, Beige, and Safety Yellow. Custom colors are available and subject to minimum order requirements. Contact our customer service department for more information: (914) 612-4990.

Black:	600K06
Medium Gray:	600D18
Tile Red:	600R02
Beige:	600T01
Safety Yellow:	600Y03

Specifications

VOC:	2.07 lbs/gal (248 grams/liter)
Solids by Volume:	62 +/- 2%
Dry Time @70°F (21°C):	Light Traffic: 12 hours Heavy Traffic: 48 hours Full Cure: 7-10 days
Theoretical Coverage:	75 ft ² /gallon (roller), 60 ft ² /gallon (trowel), 90 ft ² /gallon (sprayed)
Coefficient of Friction ASTM F609:	Dry: 1.2 Wet: 1.0
Packaging:	1 gallon and 5 gallon
Shelf life:	2 Years

Date

01/2019



**RAMPS &
WALKWAYS**



DECKS



GARAGES



**COMMERCIAL
ENTRANCES**



SCHOOLS



**MACHINE
SHOPS**



**STEP
BUMPER**



**MANUFACTURING
FACILITIES**

Manufacturer warrants that its products meet its internal specifications and are of merchantable quality. However, the purchaser is solely responsible for the suitability of the product for any particular application. The purchaser should test or qualify the product for serviceability, environmental compliance and health and safety factors prior to use. Further, our total liability is limited to the price of the product or its replacement in kind.

GRIPSUR DOT Anti-Slip Coating

Vehicular Grade Two Component Epoxy Floor and Deck Coating

Product Description

GRIPSUR DOT is a two component epoxy anti-slip floor and deck coating engineered to offer anti-slip protection in areas with rolling vehicular and heavy pedestrian traffic.

GRIPSUR DOT is suitable for marine and industrial environments. It is easy to apply and offers excellent adhesion to concrete, wood and metal surfaces.

GRIPSUR DOT has excellent chemical resistance to oil, gasoline, acids, caustics, hydraulic fluids and most solvents.

GRIPSUR DOT has self extinguishing properties in its cured state.

GRIPSUR DOT has been formulated to meet the strict requirements of South Coast Air Quality Management District Rule 1113. GRIPSUR DOT is USDA acceptable.

Surface Preparation

Concrete: Remove oil, grease, dirt, or other surface contaminants using a commercial grade cleaner/degreaser. Flush the area with water to remove any residues and allow to dry. Remove any paint, laitance or loose concrete by scarification or blasting. Smooth or glazed surfaces should be roughened to improve adhesion. New concrete should be cured for at least 30 days prior to application. All release agents, hardeners or sealers must also be removed as they may interfere with adhesion. Prime the clean, dry surface with GRIPSUR WB Epoxy Surface Primer.

Metal: All surfaces must be clean, dry and free of surface contamination. The surface should be prepared to a minimum Commercial Blast per SSPC-SP 6. Prime blasted surfaces immediately with GRIPSUR Metal Primer to prevent flash rust.

Wood/Fiberglass: Remove oil, grease, dirt, or other surface contaminants using a commercial grade cleaner/degreaser. Flush the area with water to remove any residues and allow to dry. Sand the surface to remove loose material and to create a surface profile for application. Prime wooden surfaces with GRIPSUR WB Epoxy Surface Primer. Prime fiberglass surfaces with GRIPSUR Metal Primer.

Application

GRIPSUR DOT is designed to be applied over a primer or sealer.

Mixing should be done with a mechanical mixer such as a pneumatic drill motor with a Jiffy® mixing blade. Premix the base component for several minutes making sure all material is lifted off the bottom and uniformly mixed. Pour the entire contents of the hardener container into the base component. Mix thoroughly as described above for 3-5 minutes until contents are a uniform color.

Apply at surface temperatures between 50°F (10°C) and 130°F (54°C). Application below 50°F (10°C) is not recommended as material may not cure properly. Protect exterior applications from rain for at least 24 hours.

GRIPSUR DOT Anti-Slip Coating

Vehicular Grade Two Component Epoxy Floor and Deck Coating

Application Techniques

Roller: The best anti-slip characteristics are obtained when the product is applied by roller. For best results, do not thin and apply using a phenolic core roller on even surfaces. On irregular surfaces use a bristle core roller or short nap roller.

To roll, pour a strip of the anti-slip coating approximately 2" long and 6" wide on the surface being coated. Roll by pulling the material toward you in slow straight strokes. Roll material in one direction only.

Use a modest amount of downward pressure on the roller. It is important that the rolled profile expose the maximum amount of non-slip aggregate. If the aggregate is not properly exposed, the coating may become slippery when wet. Make sure coating is even without any thick puddles. If the coating is too heavy, it may not cure properly.

Spray: This coating can be sprayed using Mastic Spray Equipment. Sprayed applications will provide a uniform appearance with good anti-slip properties. To spray, use a minimum of a 5 gallon bottom outlet pressure pot equipped with a double regulator and air driven agitator with a 1" I.D. outlet pipe. Use a maximum of 25' of 3/8" hose for air and a maximum of 25' of 3/4" hose for the material. The spray gun should be equipped with a 1/4" fluid nozzle and a 1/4" internal air cap.

Minimum air supply is 20 CFM at 90 lbs. pressure.

Material pressure should be 15-20 psi.

Fluid pressure should be 20-25 psi.

Maintain constant agitation of the product to insure the aggregate does not settle out during application. Spray at a distance of 16"-24" from the surface.

Trowel: GRIPSUR DOT may be applied with a smooth trowel such as a flexible plasterer's finishing trowel. Use a trowel of about 4" by 12" for best results. Pour a strip of GRIPSUR DOT on the surface approximately 2" long and 6" wide. Hold the trowel at a 45° degree angle to the surface and spread with a full motion. Reverse the angle of the trowel for an opposite stroke. Pull the material toward you to give the proper appearance.

Surface Maintenance

Maintain a clean surface to ensure the maximum performance from the anti-slip coating. The following cleaning procedure is recommended: Foreign matter such as chewing gum should be removed with a scraper or putty knife. Use an all purpose biodegradable cleaner/degreaser mixed with water to clean the surface. Scrub the surface with a long handled, fiber bristled brush or floor machine. Rinse with clean water and dry.

Note: While BCA Construction Specialties, Inc. anti-slip coatings are very durable, they are not a permanent coating solution and will require occasional touch up, especially in heavy traffic areas.

Safety precautions: This product is intended for professional use in an industrial environment only. Consult the Safety Data Sheet prior to application.

GRIPSUR DOT Anti-Slip Coating

Vehicular Grade Two Component Epoxy Floor and Deck Coating

Standard Colors

Black, Medium Gray, Tile Red, and Safety Yellow. Custom colors are available and subject to minimum order requirements. Contact our customer service department for more information (914) 612-4990.

Black:	600K02
Tile Red:	600R07
Medium Gray:	600D16
Safety Yellow:	600Y06
Sold with hardener	610C06

Specifications

VOC:	2.07 lbs/gal (248 grams/liter)
Solids by Volume:	68 +/- 2%
Dry Time @70°F (21°C):	Light Traffic: 12 hours Heavy Traffic: 48 hours Full Cure: 7-10 days
Theoretical Coverage:	40 ft ² /gallon (roller), 50 ft ² /gallon (trowel), 60 ft ² /gallon (sprayed)
Coefficient of Friction ASTM F609:	Dry: 1.05 Wet: 1.05
Packaging:	1 gallon kit and 5 gallon kit
Pot life @70°F (21°C):	4 hours
Shelf life:	2 Years

Date

01/2019



RAMPS



WALKWAYS
& STAIRS



FORKLIFT
AREAS



LOADING DOCKS



STADIUMS



SHIPS &
WORK BOATS



PRINTING
PLANTS



TAILGATES



CHEMICAL
PROCESSING



TRANSIT
SYSTEMS



MACHINE
SHOPS



MARINAS

Manufacturer warrants that its products meet its internal specifications and are of merchantable quality. However, the purchaser is solely responsible for the suitability of the product for any particular application. The purchaser should test or qualify the product for serviceability, environmental compliance and health and safety factors prior to use. Further, our total liability is limited to the price of the product or its replacement in kind.

GRIPSUR DOT 2500 Anti-Slip Coating

100% Solids Two Component Epoxy Floor and Deck Coating

Product Description

GRIPSUR DOT 2500 is a two component Zero VOC 100% solids epoxy anti-slip floor and deck coating engineered to offer anti-slip protection in areas with heavy rolling and pedestrian traffic.

GRIPSUR DOT 2500 is suitable for marine and demanding industrial environments. It is easy to apply and has very little odor which makes it ideal for use in odor sensitive applications such as wineries, food processing facilities, hospitals, and confined areas. It is designed to adhere to both metal and wood surfaces.

GRIPSUR DOT 2500 has excellent chemical resistance to oil, gasoline, acids, caustics, hydraulic fluids and most solvents. GRIPSUR DOT 2500 has self extinguishing properties in its cured state.

GRIPSUR DOT 2500 has been formulated to meet the strict requirements of South Coast Air Quality Management District Rule 1113. GRIPSUR DOT 2500 is USDA acceptable.

Surface Preparation

Concrete: Remove oil, grease, dirt, or other surface contaminants using a commercial grade cleaner/degreaser. Flush the area with water to remove any residues and allow to dry. Remove any paint, laitance or loose concrete by scarification or blasting. Smooth or glazed surfaces should be roughened to improve adhesion. New concrete should be cured for at least 30 days prior to application. All release agents, hardeners or sealers must also be removed as they may interfere with adhesion. Prime the clean, dry surface with GRIPSUR WB Epoxy SurfacePrimer.

Metal: All surfaces must be clean, dry and free of surface contamination. The surface should be prepared to a minimum Commercial Blast per SSPC-SP 6. Prime blasted surfaces immediately with GRIPSUR Metal Primer to prevent flash rust.

Wood/Fiberglass: Remove oil, grease, dirt, or other surface contaminants using a commercial grade cleaner/degreaser. Flush the area with water to remove any residues and allow to dry. Sand the surface to remove loose material and to create a surface profile for application. Prime wooden surfaces with GRIPSUR WB Epoxy Surface Primer. Prime fiberglass surfaces with GRIPSUR Metal Primer.

Application

GRIPSUR DOT 2500 is designed to be applied over a primer or sealer.

Mixing should be done with a mechanical mixer such as a pneumatic drill motor with a Jiffy® mixing blade. Premix the base component for several minutes making sure all material is lifted off the bottom and uniformly mixed. Pour the entire contents of the hardener container into the base component. Mix thoroughly as described above for 3-5 minutes until contents are a uniform color.

Apply at surface temperatures between 40°F (5°C) and 120°F (49°C). Application below 40°F (5°C) is not recommended as material may become difficult to apply and not cure properly. Protect exterior applications from rain for at least 24 hours.

GRIPSUR DOT 2500 Anti-Slip Coating

100% Solids Two Component Epoxy Floor and Deck Coating

Application Techniques

Roller: The best anti-slip characteristics are obtained when the product is applied by roller. For best results, do not thin and apply using a phenolic core roller on even surfaces. On irregular surfaces use a bristle core roller or short nap roller. To roll, pour a strip of the anti-slip coating approximately 2" long and 6" wide on the surface being coated. Roll by pulling the material toward you in slow straight strokes. Roll material in one direction only. Use a modest amount of downward pressure on the roller. It is important that the rolled profile expose the maximum amount of non-slip aggregate. If the aggregate is not properly exposed, the coating may become slippery when wet. Make sure coating is even without any thick puddles. If the coating is too heavy, it may not cure properly.

Spray: This coating can be sprayed using Mastic Spray Equipment. Sprayed applications will provide a uniform appearance with good anti-slip properties.

To spray, use a minimum of a 5 gallon bottom outlet pressure pot equipped with a double regulator and air driven agitator with a 1" I.D. outlet pipe.

Use a maximum of 25' of 3/8" hose for air and a maximum of 25' of 3/4" hose for the material.

The spray gun should be equipped with a 1/4" fluid nozzle and a 1/4" internal air cap.

Minimum air supply is 20 CFM at 90 lbs. pressure.

Material pressure should be 15-20 psi.

Fluid pressure should be 20-25 psi.

Maintain constant agitation of the product to insure the aggregate does not settle out during application.

Spray at a distance of 16"-24" from the surface.

Trowel: GRIPSUR DOT 2500 may be applied with a smooth trowel such as a flexible plasterer's finishing trowel. Use a trowel of about 4" by 12" for best results. Pour a strip of GRIPSUR DOT 2500 on the surface approximately 2" long and 6" wide. Hold the trowel at a 45° degree angle to the surface and spread with a full motion. Reverse the angle of the trowel for an opposite stroke. Pull the material toward you to give the proper appearance.

Surface Maintenance

Maintain a clean surface to ensure the maximum performance from the anti-slip coating. The following cleaning procedure is recommended:

Foreign matter such as chewing gum should be removed with a scraper or putty knife.

Use an all purpose biodegradable cleaner/degreaser mixed with water to clean the surface. Scrub the surface with a long handled, fiber bristled brush or floor machine.

Rinse with clean water and dry.

Note: While BCA Construction Specialties, Inc. anti-slip coatings are very durable, they are not a permanent coating solution and will require occasional touch up, especially in heavy traffic areas.

Safety precautions: This product is intended for professional use in an industrial environment only. Consult the Safety Data Sheet prior to application.

GRIPSUR DOT 2500 Anti-Slip Coating

100% Solids Two Component Epoxy Floor and Deck Coating

Standard Colors

Black, Gray, Light Gray, Tile Red, and Safety Yellow. Custom colors are available and subject to minimum order requirements. Contact our customer service department for more information (914) 612-4990.

Black:	600K05
Gray:	600D08
Light Gray:	600D2501
Tile Red:	600R01
Safety Yellow:	600Y02
Sold with hardener	610C11

Specifications

Theoretical Coverage:	35 ft ² /gallon (roller), 40 ft ² /gallon (trowel), 60 ft ² /gallon (sprayed) Note: Bristle core roller coverage will be lower than with phenolic roller
Coefficient of Friction ASTM F609:	Dry: 1.1 Wet: 1.0
Packaging:	1 gallon kit and 5 gallon kit
Pot life @70°F (21°C):	1 gallon kit: 45 minutes 5 gallon kit: 30 minutes
Shelf life:	2 Years



WINERIES &
BOTTLING
FACILITIES



FOOD
PROCESSING
PLANTS



CANNERIES
PACKING
FACILITIES



WAREHOUSES

Manufacturer warrants that its products meet its internal specifications and are of merchantable quality. However, the purchaser is solely responsible for the suitability of the product for any particular application. The purchaser should test or qualify the product for serviceability, environmental compliance and health and safety factors prior to use. Further, our total liability is limited to the price of the product or its replacement in kind.



GRIPSUR Rust Inhibitor Metal Primer

Epoxy Non-Skid Deck Coating

Product Description

GRIPSUR Rust Inhibitor Metal Primer is a two component anti-corrosive epoxy primer for use under deck coatings. It has been engineered to provide excellent adhesion to the substrate.

GRIPSUR Rust Inhibitor Metal Primer is suitable for marine and industrial environments.

It offers excellent chemical resistance to oil, gasoline, acids, caustics, hydraulic fluids and most solvents.

Surface Preparation

Apply GRIPSUR Rust Inhibitor Metal Primer to clean, dry surfaces. Remove old loose and flaking paint, rust and loose debris by mechanical means. Remove oil, grease, dirt, wax, etc., with a water-based cleaner degreaser. Metal surfaces should be blasted to SSPC-SP10 (Near White Metal). Where blasting is not feasible, power tool cleaning utilizing power sanders fitted with #16 grit aluminum oxide sanding discs can produce a sufficient profile for coating.

Application

Mixing: GRIPSUR Rust Inhibitor Metal Primer is a two part product. Mixing should be done with a mechanical mixer such as a pneumatic drill motor equipped with a Jiffy® mixing blade. Pre-mix the base component for several minutes making sure all material is lifted off the bottom and uniformly mixed. Pour the entire contents of the hardener container into the base component and mix thoroughly as described above for 3-5 minutes until contents are a uniform color.

Application Techniques

Apply by short nap mohair type roller, brush, or spray. Primer can be sprayed by airless, air assisted airless or conventional spray equipment.

Important: Primed surfaces should be protected from contamination. Should the surface become contaminated prior to coating, clean the area before applying the topcoat.

Safety precautions: This product is intended for professional use in an industrial environment only. Consult the Safety Data Sheet prior to application.

Standard Colors

Gray	600D02
Sold with hardener 610C02	



GRIPSUR Rust Inhibitor Metal Primer

Epoxy Non-Skid Deck Coating

Specifications

VOC:	2.1 lbs/gal (253 grams/liter)
Solids by Volume:	72 +/- 2%
Dry Time @70°F (21°C):	Set to touch: 6 hours Dry to Recoat: 12 hours Dry Hard: 12 hours
Theoretical Coverage@ 1 mil dft:	1155 ft ² /gallon
Recommended Film Thickness:	2-7 mils
Packaging:	1 gallon kit and 5 gallon kit
Pot Life @ 70°F (21°C):	4 hours. Pot life will increase at lower temperatures and decrease at higher temperatures
Shelf life:	2 Years for commercial applications

Date

05/2019

Manufacturer warrants that its products meet its internal specifications and are of merchantable quality. However, the purchaser is solely responsible for the suitability of the product for any particular application. The purchaser should test or qualify the product for serviceability, environmental compliance and health and safety factors prior to use. Further, our total liability is limited to the price of the product or its replacement in kind.

GRIPSUR Water-Based Epoxy Surface Primer

GRIPSUR WB Epoxy Primer for Anti-Slip Floor and Deck Coatings

Product Description

GRIPSUR WB Epoxy Surface Primer is a low odor, low VOC, two component water-based epoxy primer that provides excellent adhesion for anti-slip flooring and deck coatings on concrete, wood, tile and other porous surfaces.

This primer is ideal for use in kitchens, hospitals, beverage plants and places sensitive to odors during application.

It has been formulated to meet the strict requirements of South Coast Air Quality Management District Rule 1113.

Surface Preparation

Concrete: New concrete should be cured for at least 30 days prior to application. After proper curing, remove all contaminants such as laitance, curing membranes, surface hardeners, greases and oils as they may interfere with adhesion. Remove oil, grease, dirt, or other surface contaminants using a commercial grade cleaner/degreaser then flush the area with water to remove any residues and allow to dry. Chemical cleaning of laitance and attached particles can be removed by etching the surface with muriatic acid or a suitable buffered acid solution. Follow acid manufacturer's safety instructions. After the acid has finished reacting with the concrete, remove the residue with a water rinse, preferably by power washing and allow to dry completely. A profile must be created using chemical or mechanical means before applying the primer. The preferred method to prepare concrete floor surfaces is by mechanical means with a portable shot blast cleaning machine. For aged and old concrete floors, proceed as above while focusing on removing surface contaminants. Smooth or glazed surfaces should be roughened to improve adhesion. Floors should be swept clean to promote good adhesion of the coating system.

Note: Acid etching will not remove oil, grease or wax. If the acid does not bubble or foam when spread on the concrete, the surface should be examined for films of oil, grease, wax, curing membranes, hardeners or other sealers. These materials must be removed to properly etch the surface.

Previously Painted Surfaces: The adhesion of applied coatings over previously painted surfaces is directly influenced by the type, age and condition of the old coating. Hard or glossy paints must be dulled by sanding, abrasive blasting, or other abrasive methods. A test patch should be applied to check for lifting or wrinkling of the old coating. If wrinkling or lifting occurs after overnight drying, remove the old coating.

Wood Floors: Weathered wood should be removed or water blasted to expose a clean solid substrate. Smooth wood should be sanded to ensure proper adhesion.

Tile and Fiberglass: Glazed and ceramic tile and fiberglass must be sanded to remove all glaze to ensure a good mechanical bond. Remove any residual sanding by blowing air over the surface or wiping with alcohol.

Application

Mixing: GRIPSUR WB Epoxy Surface Primer is a two component product. Pour the hardener into the base component and mix thoroughly, preferably with a mechanical mixer such as a pneumatic drill motor equipped with a Jiffy® mixing blade until contents are a uniform color. Do NOT thin.



GRIPSUR Water-Based Epoxy Surface Primer

Epoxy Primer for Anti-Slip Floor and Deck Coatings

Apply when the surface and ambient temperatures are above 50°F (10°C) and the material temperature is above 50°F (10°C). Application is not recommended over 120°F (49°C). The surface to be painted must be at least 5°F (3°C) above the dew point.

Application Techniques

Apply using a short nap mohair type roller or brush. Primer can be sprayed by airless, air assisted airless or conventional spray equipment.

If more than 7 days elapses after priming, the surface must be brushed blasted and the primer reapplied.

Important: Primed surfaces should be protected from contamination. Should the surface become contaminated prior to coating, clean the area before applying the topcoat.

Safety precautions: This product is intended for professional use in an industrial environment only. Consult the Safety Data Sheet prior to application.

Standard Colors

650C01
Sold with hardener

Clear Base
655C01

Specifications

VOC:	0.83 lbs/gal (100 grams/liter)
Solids by Volume:	40 +/- 2%
Dry Time @70°F (21°C)/50% RH:	Dry to Recoat: 6 hours Recoat: 7 days max
Mix Ratio:	3:1 by volume
Theoretical Coverage@ 1 mil dft:	642 ft ² /gallon
Recommended dft:	2-3 mils
Packaging:	1 gallon kit and 4 gallon kit
Pot Life @ 70°F (21°C):	2 hours: Do not use material after 2 hours as it will not cure properly
Shelf life:	2 Years

Date

05/2019

Manufacturer warrants that its products meet its internal specifications and are of merchantable quality. However, the purchaser is solely responsible for the suitability of the product for any particular application. The purchaser should test or qualify the product for serviceability, environmental compliance and health and safety factors prior to use. Further, our total liability is limited to the price of the product or its replacement in kind.

GRIPSUR Acrylic Primer for Anti-Slip Coatings

Water-Based Primer for Acrylic Floor and Deck Coatings

Product Description

GRIPSUR Acrylic Primer is a single component zero VOC water-based acrylic primer that is designed to increase adhesion of GRIPSUR REC ACRYLIC anti-slip floor coating to asphalt, wood and concrete surfaces.

This primer is easy to apply and offers excellent adhesion.

It has been formulated to meet the strict requirements of South Coast Air Quality Management District Rule 1113.

Surface Preparation

Concrete: New concrete should be cured for at least 30 days prior to application. After proper curing, remove all contaminants such as laitance, curing membranes, surface hardeners, greases and oils as they may interfere with adhesion. Remove oil, grease, dirt, or other surface contaminants using a commercial grade cleaner/degreaser then flush the area with water to remove any residues and allow to dry. Chemical cleaning of laitance and attached particles can be removed by etching the surface with muriatic acid or a suitable buffered acid solution. Follow acid manufacturer's safety instructions. After the acid has finished reacting with the concrete, remove the residue with a water rinse, preferably by power washing and allow to dry completely. A profile must be created using chemical or mechanical means before applying the primer. The preferred method to prepare concrete floor surfaces is by mechanical means with a portable shot blast cleaning machine. For aged and old concrete floors, proceed as above while focusing on removing surface contaminants. Smooth or glazed surfaces should be roughened to improve adhesion. Floors should be swept clean to promote good adhesion of the coating system.

Note: Acid etching will not remove oil, grease or wax. If the acid does not bubble or foam when spread on the concrete, the surface should be examined for films of oil, grease, wax, curing membranes, hardeners or other sealers. These materials must be removed to properly etch the surface.

Asphalt: Sweep the surface to remove all loose contaminants. Remove oil, grease, dirt, or other surface contaminants using a commercial grade cleaner/degreaser intended for cleaning asphalt. Flush the area with water to remove any residues and let dry. Repair any loose or cracked asphalt.

Wood Floors: Weathered wood should be removed or water blasted to expose a clean solid substrate. Smooth wood should be sanded to ensure proper adhesion.

Tile and Fiberglass: Glazed and ceramic tile and fiberglass must be sanded to remove all glaze to ensure a good mechanical bond. Remove any residual sanding by blowing air over the surface or wiping with alcohol.

Application

Apply when the surface and ambient temperatures are above 50°F (10°C) and the material temperature is above 60°F (15°C). Application is not recommended over 120°F (49°C). The surface to be painted must be at least 5°F (3°C) above the dew point.

Apply using a short nap mohair type roller or brush. Primer can be sprayed by airless, air assisted airless or conventional spray equipment.



GRIPSUR Acrylic Primer for Anti-Slip Coatings

Water-Based Primer for Acrylic Floor and Deck Coatings

Important: Primed surfaces should be protected from contamination. Should the surface become contaminated prior to coating, clean the area before applying the topcoat.

Safety precautions: This product is intended for professional use in an industrial environment only. Consult the Safety Data Sheet prior to application.

Standard Colors

660C01 Clear

Specifications

VOC:	0.0 lbs/gal (0 grams/liter)
Solids by Volume:	20 +/- 2%
Dry Time @70°F (21°C)/50% RH:	Dry to recoat: 2 hours
Theoretical Coverage @ 1 mil dft:	321 ft ² /gallon
Recommended Dry Film Thickness:	2-3 mils
Packaging:	1 gallon and 5 gallon
Shelf life:	2 Years

Date

05/2019

Manufacturer warrants that its products meet its internal specifications and are of merchantable quality. However, the purchaser is solely responsible for the suitability of the product for any particular application. The purchaser should test or qualify the product for serviceability, environmental compliance and health and safety factors prior to use. Further, our total liability is limited to the price of the product or its replacement in kind.